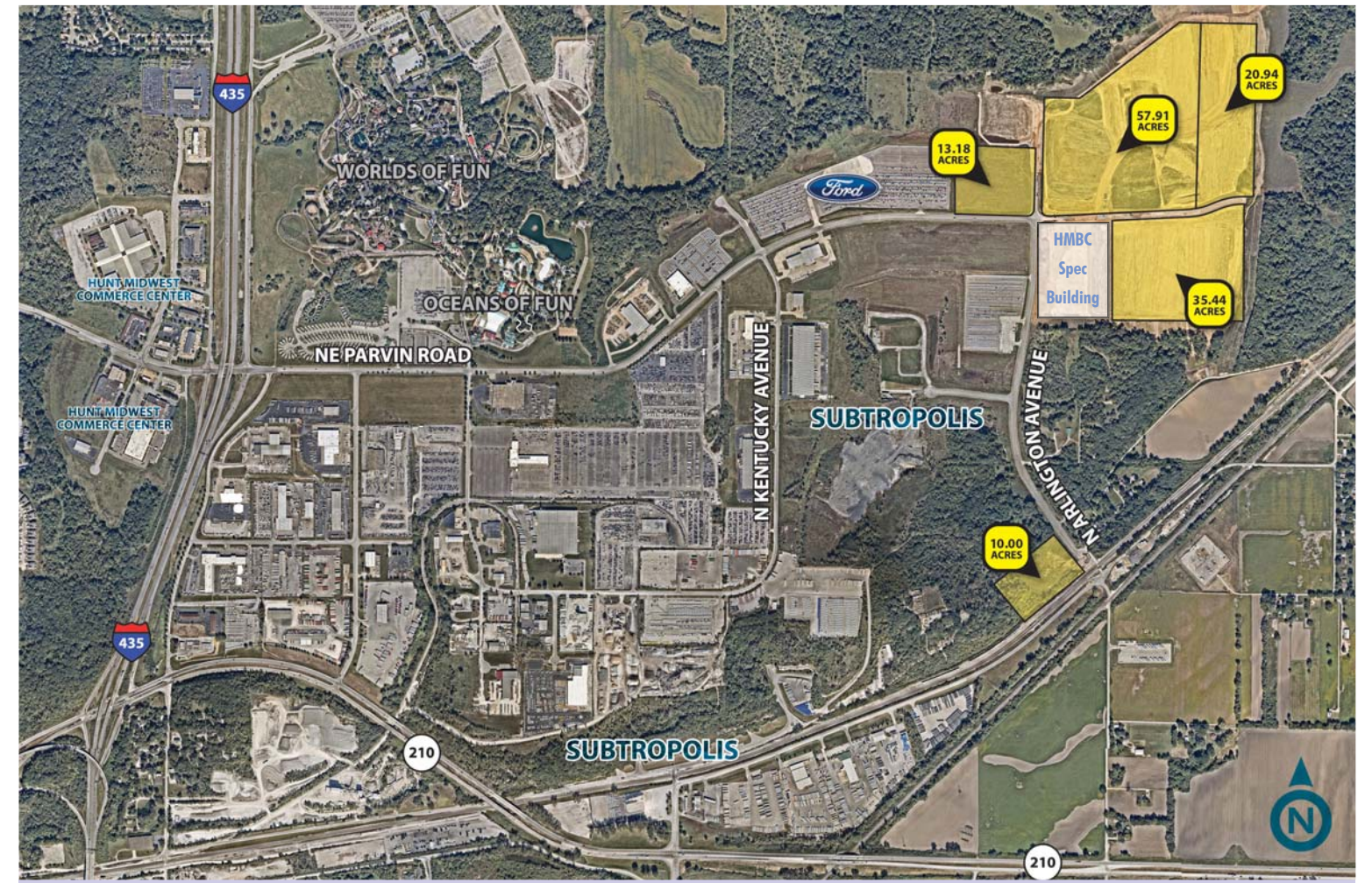


# HUNT MIDWEST BUSINESS CENTER

I-435 & NE PARVIN ROAD :: KANSAS CITY, MO



FOR MORE INFORMATION CONTACT:

**David C Hinchman SIOR**

+1 816 968 5812

david.hinchman@cbre.com

**Austin Baier**

+1 816 968 5841

austin.baier@cbre.com

CBRE | 4520 Main Street | Suite 600 | Kansas City, MO 64111 | [www.cbre.com/kansascity](http://www.cbre.com/kansascity)

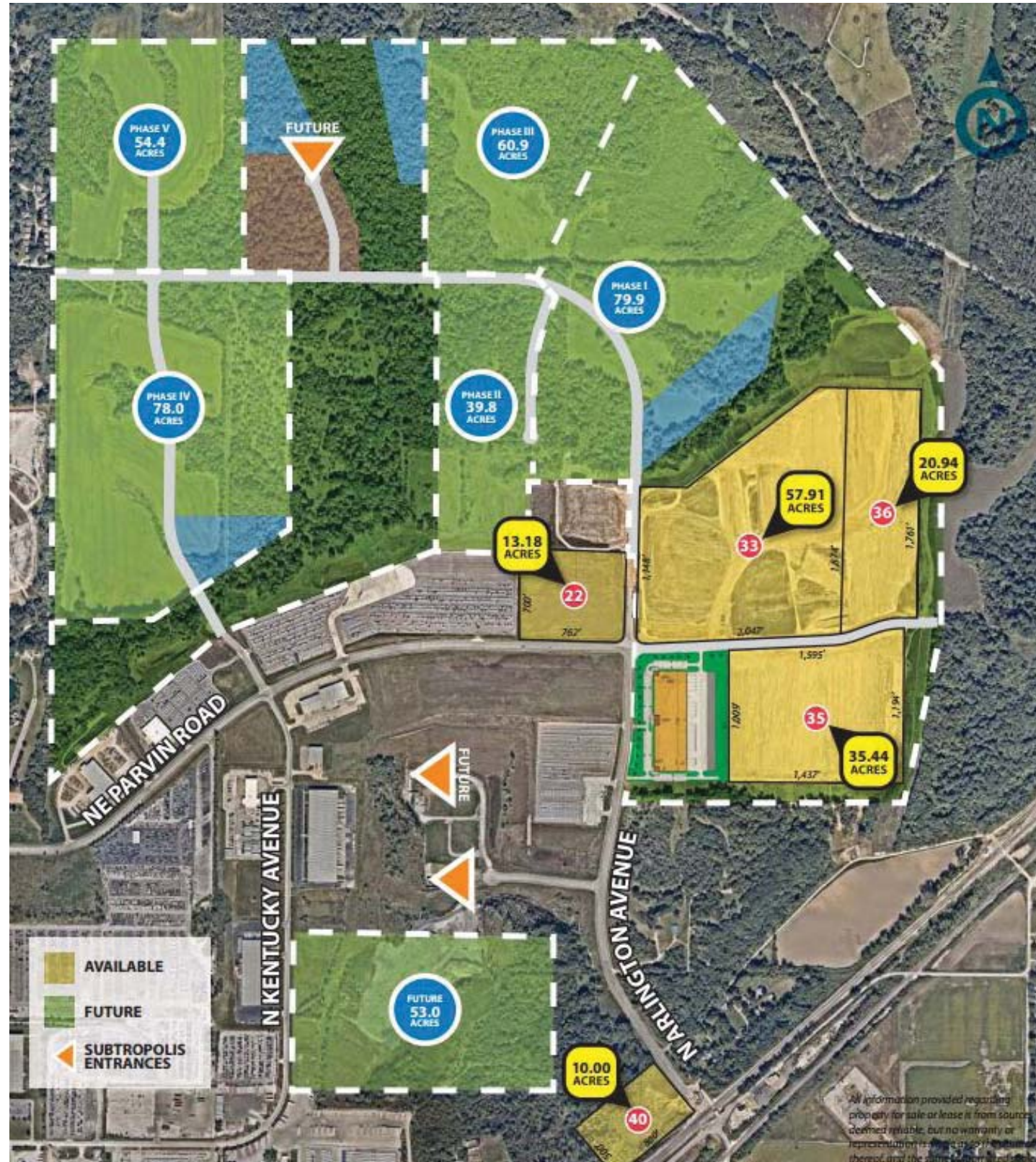
© 2016 CBRE, Inc. This information has been obtained from sources believed reliable. We have not verified it and make no guarantee, warranty or representation about it. Any projections, opinions, assumptions or estimates used are for example only and do not represent the current or future performance of the property. You and your advisors should conduct a careful, independent investigation of the property to determine to your satisfaction the suitability of the property for your needs.







# 13.18 to 80.00± ACRES FOR SALE OR BUILD-TO-SUIT



### INCENTIVES

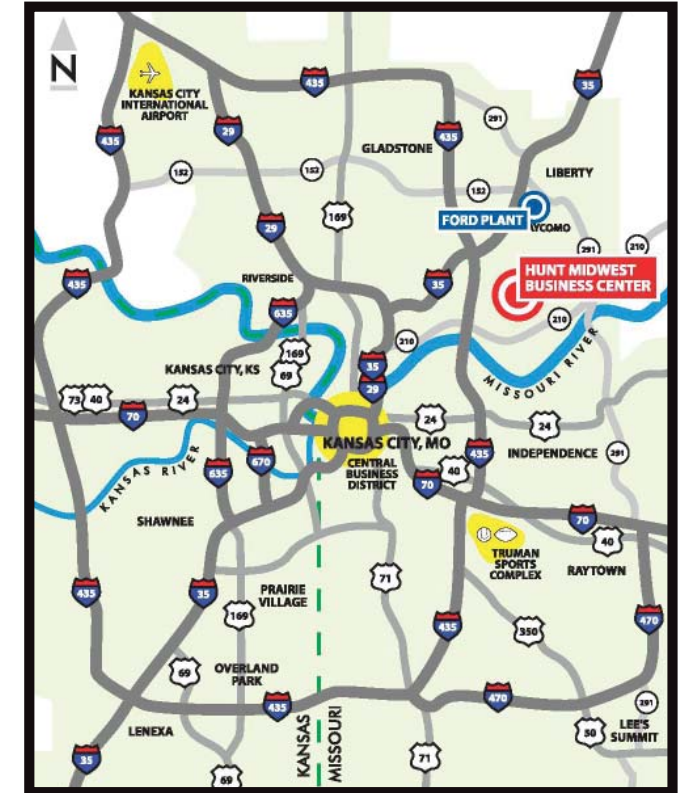
- Missouri Enhanced Enterprise Zone
- Foreign Trade Zone
- Tax Abatement Potential for 10+ Acre Sites

### LOCATION

- Great Access to I-435, I-35, I-29 and I-70
- 10 Minutes from Downtown
- Utilities to Site
- 5 Minutes from Ford Plant

### SITE ADVANTAGES

- Competitively Priced/Responsive Seller
- Quality Development with Protective Covenants
- Served by Regional Storm Detention
- Potential for 80-100+ Acre Sites



Join these transportation leaders already located in the Hunt Midwest Business Center:



FOR MORE INFORMATION CONTACT:

**David C Hinchman SIOR**

+1 816 968 5812

david.hinchman@cbre.com

**Austin Baier**

+1 816 968 5841

austin.baier@cbre.com

