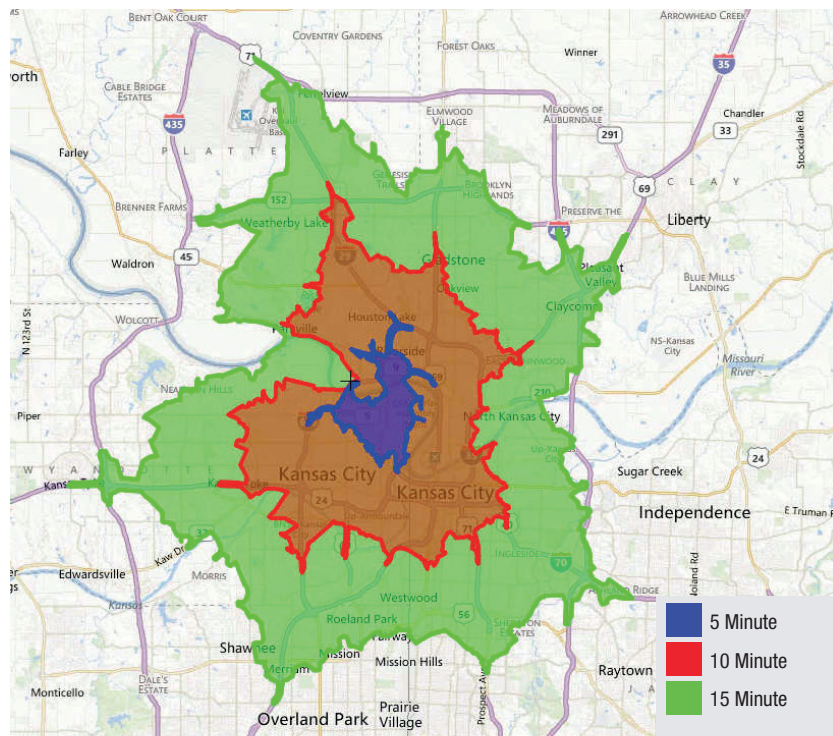




LOCAL DRIVE TIME MAP



Joseph Accurso, SIOR
816.936.8597
jaccurso@kessingerhunter.com

Brent Miles
816.888.7384
brent@northpointkc.com

KAW POINT INDUSTRIAL BUILDING

Kansas City, Kansas

396,879 SF
Divisible

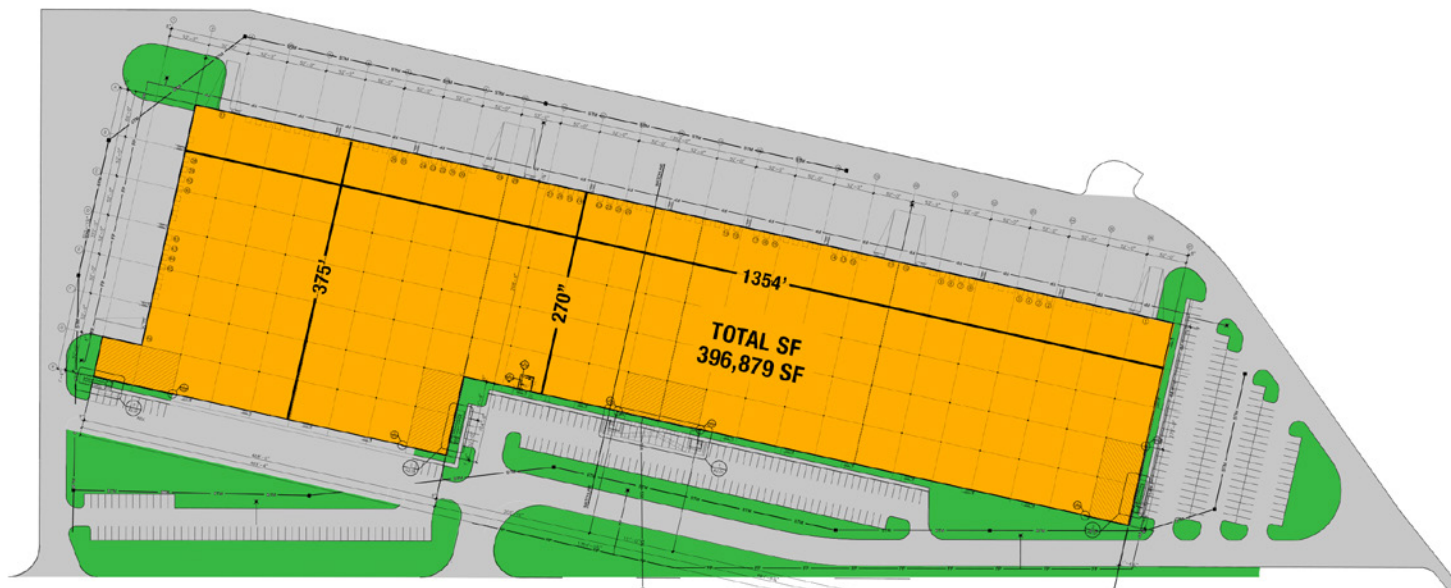
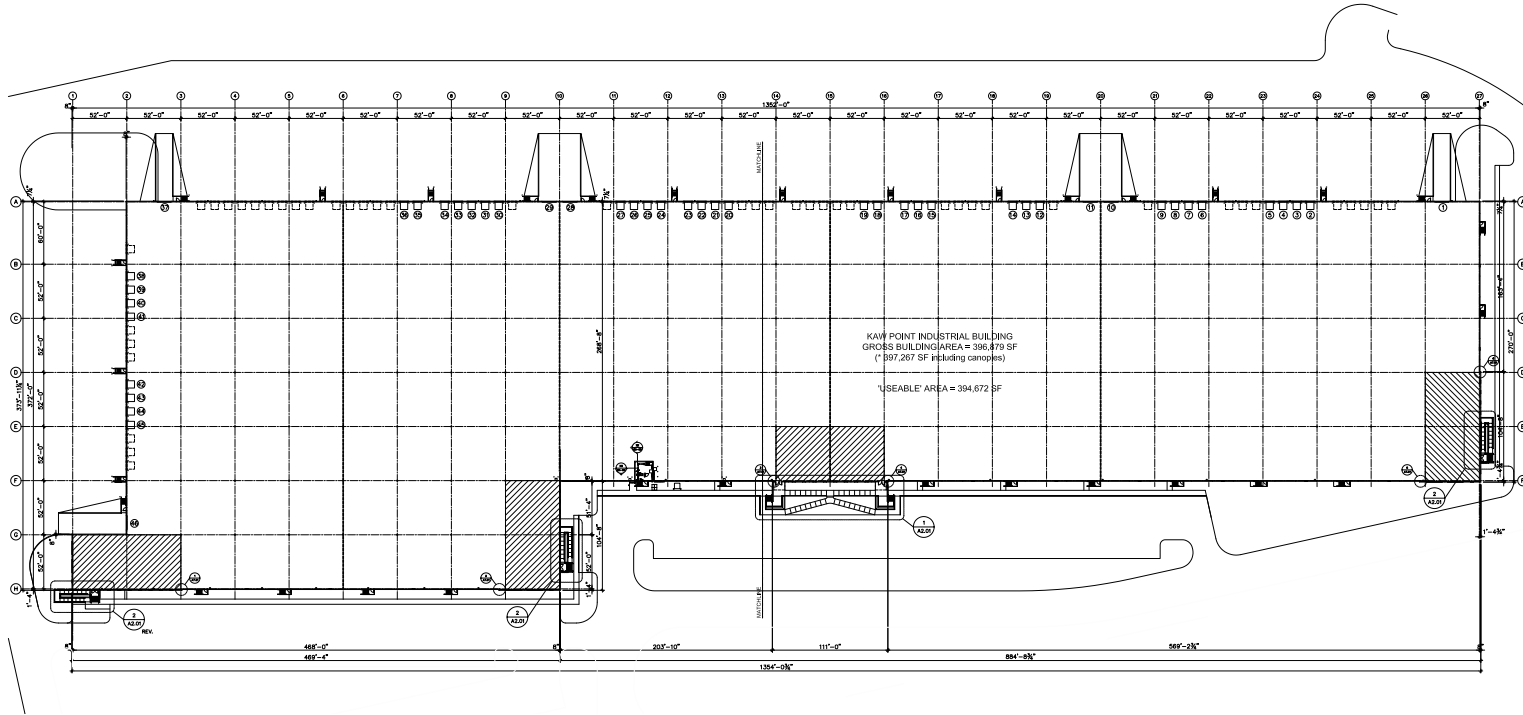
Joseph Accurso, SIOR
816.936.8597
jaccurso@kessingerhunter.com

Brent Miles
816.888.7384
brent@northpointkc.com

Chad Meyer
816.888.7387
chad@northpointkc.com



BUILDING FLOORPLAN



BUILDING QUICK FACTS

BUILDING SIZE	396,879 SF	LOADING	39 Docks & 7 Drive-ins. Up to 99 Docks Available
AVAILABILITY / DIVISIBILITY	AUGUST 2015	TRUCK COURT	135' - All Concrete
RENTAL RATE	\$4.25 - \$4.75	ELECTRICAL SERVICE	3,000 Amps @ 480V 3 Ph
CAM CHARGES	± \$0.39 / SF	LIGHTING	T-5 H0, 30 fc in Warehouse, Site Fully Lit
TAXES	\$1.00 / SF	HVAC	Heated to 50° & Ventilated
INSURANCE	\$0.06 / SF	PARKING	337 Cars / 53 Trailer Storage Stalls
TOTAL TAXES, INS, CAM	± \$1.45 / SF	ZONING	Light Industrial
DIMENSIONS	(468' x 375') (884' x 270')	YEAR BUILT	2015
OFFICE SPACE	BTS	WATER	BPU
CONSTRUCTION	Tilt-Up Construction	SEWER	UG
FLOOR	7" Concrete	ELECTRIC	BPY
CLEAR HEIGHT	34' - 36'	GAS	Kansas Gas
COLUMN SPACING	52' x 60' Speed Bays 52' x 52' Storage Bays	FIRE PROTECTION	UG FPD
SPRINKLER	ESFR - K-25	DIRECT HIGHWAY ACCESS	I-70

BUILDING LOCATION

