

# KANZA FIRE COMMERCE PARK

## PHASE II – SW 77<sup>TH</sup> Street and SW Topeka Blvd

A new business park, ready-to-build with flexible acreage for missed-use land parcels ideal for industrial development, as well as science and research facilities. An on-site interchange for US Highway 75 plus quick interstate highway access to I-335 and I-70. The park is adjacent to a 2,000 acre foreign trade zone at Topeka Regional Airport which also has a 12,800 foot runway offering heavy air freight access.

**Available Acres:** 600+ Acres (dark blue outline)

**Zoning:** Industrial - Heavy

**Topography:** Flat

**Highway access:** On Highway 75

**Adjacent:** Topeka Regional Airport

**Home to:**

- Mars Wrigley Chocolate
- Walmart Distribution

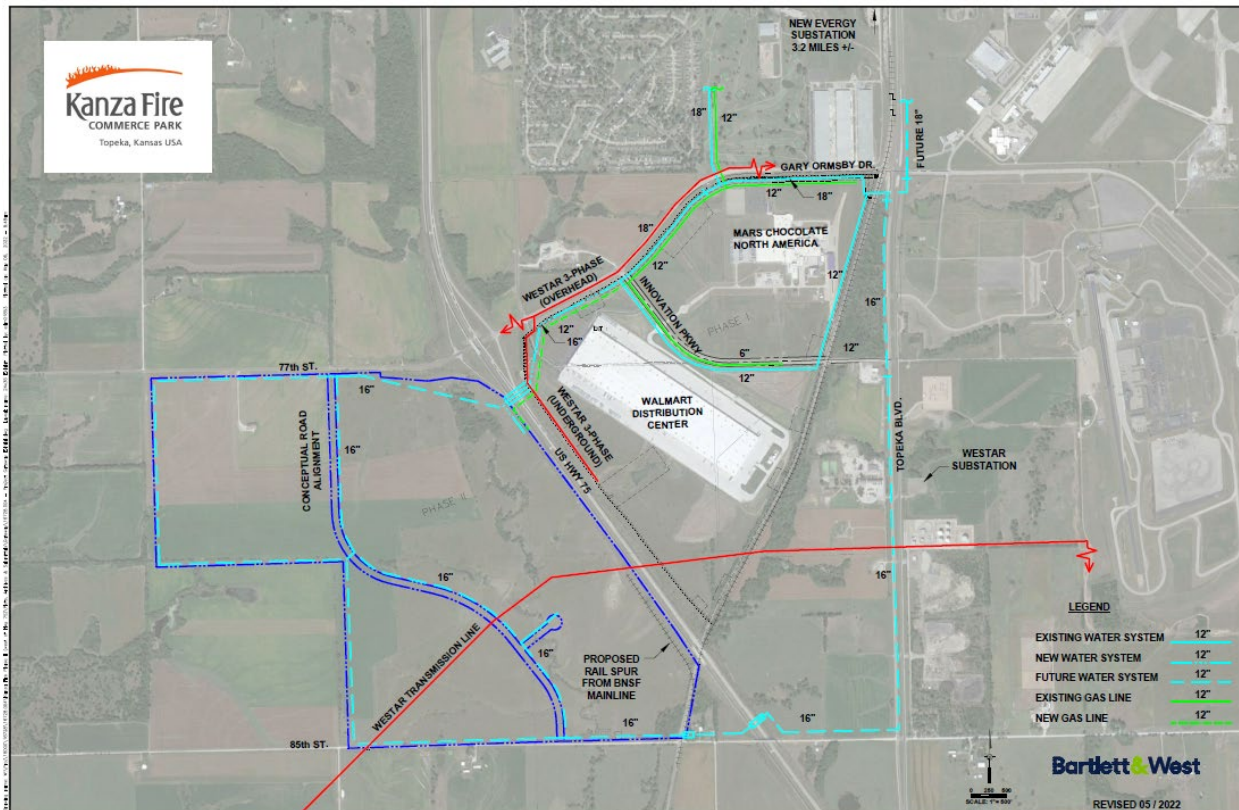
**Incentive:**

Location offered as part of incentive package

**Utilities in place:**

- 3 Phase Power
- 12" Water Line
- 6" Gas Line

**Rail:** BNSF



**Contact:**

Ashley Lehman

Business Development Manager, GO Topeka

[ashley.lehman@topekapartnership.com](mailto:ashley.lehman@topekapartnership.com)



C: 785.640.4168

719 S Kansas Ave.  
Suite 100  
Topeka, KS 66603-3807