



Central Location for Efficient Transportation



Central Location for Efficient Transportation

Transportation costs represent a significant portion of total distribution and logistics expenses. However, by locating your distribution center or warehouse at Logistics Park Kansas City (LPKC), you can reduce those transportation costs through lower drayage charges and more truck turns. You will burn less fuel and reduce your carbon footprint. A competitive cost per square foot will further boost your bottom line.

Logistics Park Kansas City: A Smart Move

Strategically and centrally located in America's heartland, LPKC is a master-planned distribution and warehouse development. Served by the world's leading intermodal rail provider, BNSF Railway, LPKC is the ideal business park, perfectly positioned for the efficient shipment of goods for import and export — serving all points throughout the United States.

LPKC is a 558-acre logistics park capable of handling seven million square feet (SF) of buildings, nearly three million of which will be direct rail-served. Because of its geographic proximity to the growing Midwest and Central United States region, LPKC is an excellent location for warehouse and distribution centers.

Served by BNSF Railway's newest state-of-the-art Intermodal Facility, LPKC is located along BNSF's Transcontinental Corridor. By co-locating at LPKC, companies gain significant transportation efficiencies.

A business park developed using the extensive experience of BNSF and NorthPoint Development, LPKC is a competitive option to optimize the global supply chain. LPKC is scheduled to open in the 4th quarter of 2013.



LPKC Intermodal Facility: Features & Benefits

BNSF Railway's newest state-of-the-art facility, the LPKC Intermodal Facility, is ideally located in the nation's heartland, and has been designed to accommodate the growing demands of freight rail transportation.

Advanced Infrastructure

- 443 acres
- 500,000+ annual unit capacity*
- 48,000 feet of track (six 8,000-foot strip tracks)
- 1,810 paved parking spaces
- 4,300 container stacking spots
- Five wide-span all-electric cranes

* 1.5 million unit capacity at full build-out

The LPKC Intermodal Facility is the only full-service facility in the western two-thirds of the United States offering the combination of:

- Domestic Intermodal Service – Container, Trailer, Expedited and Standard Service Levels
- International Intermodal Service
- Direct-rail / Carload Service

Kansas City: The Transportation Advantage

Kansas City has long been a hub for transportation. Its growing economy, geographic location, business-friendly environment, low tax rate and developed and evolving infrastructure contribute to this well-deserved reputation. It all culminates with Kansas City being an attractive location for transportation and logistics operations.

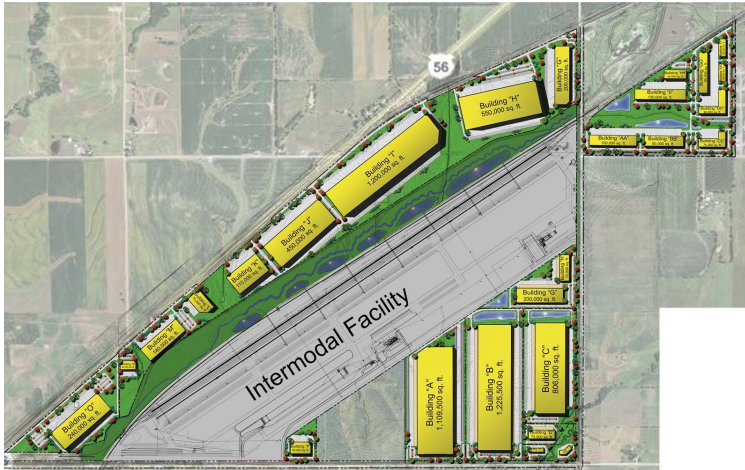
#1 RAIL by tonnage in U.S.

#3 TRUCK center in U.S.



Logistics Park Kansas City: Site Selection Features & Benefits

LPKC is equipped to be one of America's premier logistics facilities. By locating your facility at LPKC, you will have the advantage of direct use of BNSF's newest intermodal facility, inexpensive land costs, savings on lease and drayage rates, a strong available workforce, convenient interstate highway access and benefits of Foreign Trade Zone.



LPKC brings a cost-efficient solution to logistics-oriented companies focused on development in the form of competitive lease rates and other benefits such as:

- Public infrastructure investments
- Affordable utilities
- Financial incentives

Community & Regional Attributes

LPKC, located in Edgerton, Kansas, in Johnson County, is approximately 25 miles southwest of downtown Kansas City. This region is a great place to locate your warehouse or distribution center. With financial and technical resources, a skilled workforce, nationally ranked pro-business environment, highway accessibility and excellent quality of life factors, Kansas City is the ideal location for LPKC.

The Kansas City area offers:

- Abundant labor supply
- Skilled workforce that is supply chain trained
- Supply chain support companies
- State and local government support
- Business-friendly environment
- Low cost of living
- Affordable housing
- Quality education
- Low crime rates

For more information, visit logisticsparkkc.com.

