

1671 E Kansas City Road

Olathe, Kansas



Industrial Space for Lease

As exclusive agents, we are pleased to offer the following space for lease:

- ◆ 47,130 sf available (will consider demising)
- ◆ 3,300 sf (±) high quality office
- ◆ 4 dock-high doors, 3 with levelers
- ◆ 3 van-high doors
- ◆ 1 large drive-in door
- ◆ 26' clear height
- ◆ 2 temperature controlled rooms
- ◆ 3 phase power
- ◆ I-35 visibility and 150,000 (±) cars-per-day
- ◆ Lease rate of \$6.25/sf NNN

Scott Bluhm 816.268.4224 sbluhm@ngzimmer.com

Newmark Grubb
Zimmer

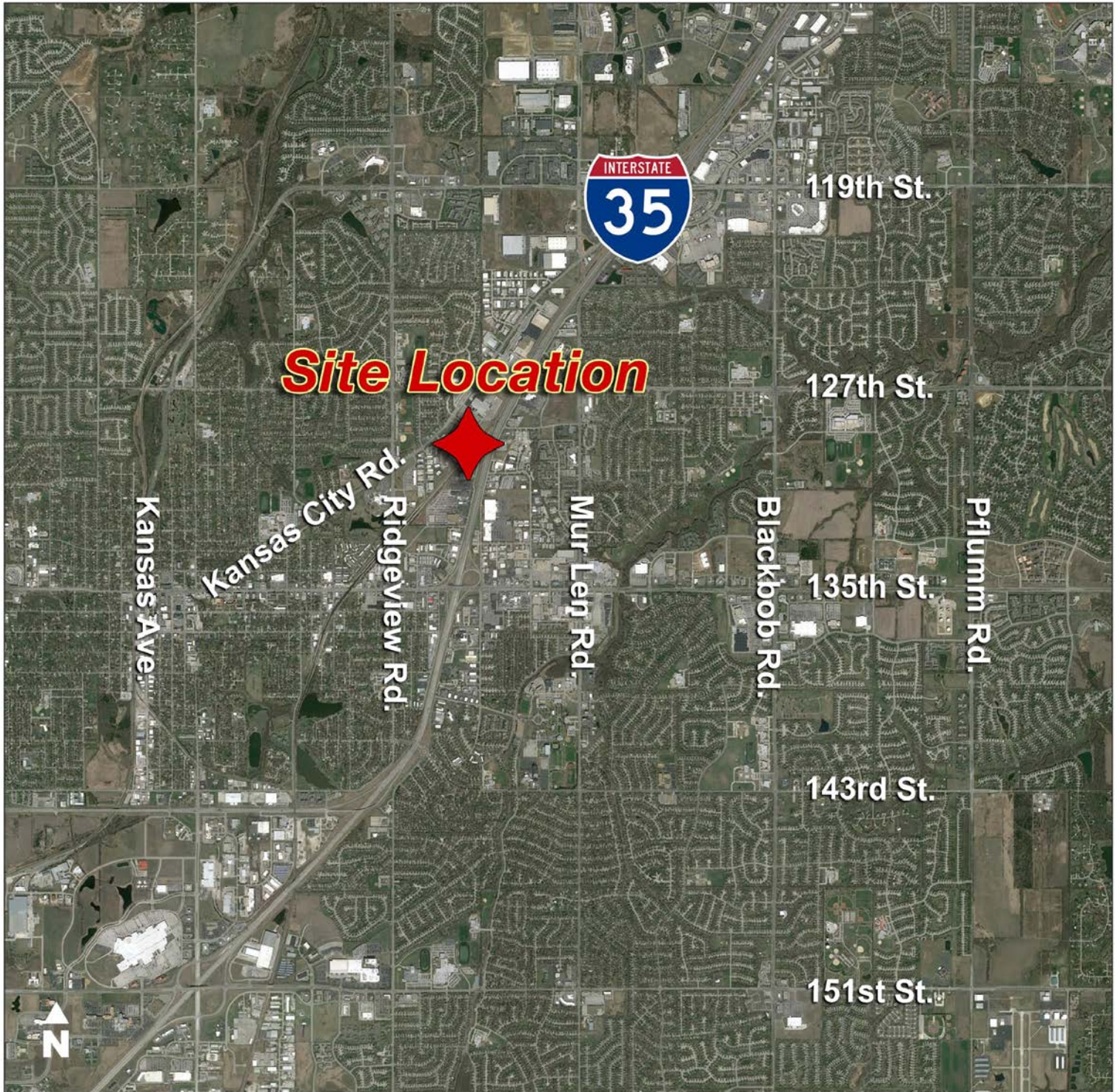
1220 Washington St, Kansas City, Missouri 64105

Independently owned and operated

Procuring broker shall only be entitled to a commission calculated in accordance with the rates approved by our principal only if such procuring broker executes a brokerage agreement acceptable to us and our principal and the conditions as set forth in the brokerage agreement are fully and unconditionally satisfied. Although all information furnished regarding property for sale, rental, or financing is from sources deemed reliable, such information has not been verified and no express representation is made nor is any to be implied as to the accuracy thereof and it is submitted subject to errors, omissions, change of price, rental or other conditions, prior sale, lease or financing, or withdrawal without notice and to any special conditions imposed by our principal.

1671 E Kansas City Road

Olathe, Kansas



Scott Bluhm 816.268.4224 sbluhm@ngzimmer.com

Newmark Grubb
Zimmer

1671 E Kansas City Road

Olathe, Kansas



Scott Bluhm 816.268.4224 sbluhm@ngzimmer.com

Newmark Grubb
Zimmer

1671 E Kansas City Road

Olathe, Kansas



Scott Bluhm 816.268.4224 sbluhm@ngzimmer.com

Newmark Grubb
Zimmer

Olathe, Kansas



This is a detailed architectural floor plan of a building, likely a school or institutional facility. The plan shows a complex layout of rooms, corridors, and structural elements. Key features include:

- Dimensions:** The plan is divided into sections with dimensions such as 50'-0", 200'-0", 46'-6", and 325'-6".
- Room Numbers and Labels:** Numerous rooms are labeled with numbers and codes, including 1671, 1675, 1681, 1682, 1683, 1684, 1685, 1686, 1687, 1688, 1689, 1690, 1691, 1692, 1693, 1694, 1695, 1696, 1697, 1698, 1699, 1700, 1701, 1702, 1703, 1704, 1705, 1706, 1707, 1708, 1709, 1710, 1711, 1712, 1713, 1714, 1715, 1716, 1717, 1718, 1719, 1720, 1721, 1722, 1723, 1724, 1725, 1726, 1727, 1728, 1729, 1730, 1731, 1732, 1733, 1734, 1735, 1736, 1737, 1738, 1739, 1740, 1741, 1742, 1743, 1744, 1745, 1746, 1747, 1748, 1749, 1750, 1751, 1752, 1753, 1754, 1755, 1756, 1757, 1758, 1759, 1760, 1761, 1762, 1763, 1764, 1765, 1766, 1767, 1768, 1769, 1770, 1771, 1772, 1773, 1774, 1775, 1776, 1777, 1778, 1779, 1780, 1781, 1782, 1783, 1784, 1785, 1786, 1787, 1788, 1789, 1790, 1791, 1792, 1793, 1794, 1795, 1796, 1797, 1798, 1799, 1800, 1801, 1802, 1803, 1804, 1805, 1806, 1807, 1808, 1809, 1810, 1811, 1812, 1813, 1814, 1815, 1816, 1817, 1818, 1819, 1820, 1821, 1822, 1823, 1824, 1825, 1826, 1827, 1828, 1829, 1830, 1831, 1832, 1833, 1834, 1835, 1836, 1837, 1838, 1839, 1840, 1841, 1842, 1843, 1844, 1845, 1846, 1847, 1848, 1849, 1850, 1851, 1852, 1853, 1854, 1855, 1856, 1857, 1858, 1859, 1860, 1861, 1862, 1863, 1864, 1865, 1866, 1867, 1868, 1869, 1870, 1871, 1872, 1873, 1874, 1875, 1876, 1877, 1878, 1879, 1880, 1881, 1882, 1883, 1884, 1885, 1886, 1887, 1888, 1889, 1890, 1891, 1892, 1893, 1894, 1895, 1896, 1897, 1898, 1899, 1900, 1901, 1902, 1903, 1904, 1905, 1906, 1907, 1908, 1909, 1910, 1911, 1912, 1913, 1914, 1915, 1916, 1917, 1918, 1919, 1920, 1921, 1922, 1923, 1924, 1925, 1926, 1927, 1928, 1929, 1930, 1931, 1932, 1933, 1934, 1935, 1936, 1937, 1938, 1939, 1940, 1941, 1942, 1943, 1944, 1945, 1946, 1947, 1948, 1949, 1950, 1951, 1952, 1953, 1954, 1955, 1956, 1957, 1958, 1959, 1960, 1961, 1962, 1963, 1964, 1965, 1966, 1967, 1968, 1969, 1970, 1971, 1972, 1973, 1974, 1975, 1976, 1977, 1978, 1979, 1980, 1981, 1982, 1983, 1984, 1985, 1986, 1987, 1988, 1989, 1990, 1991, 1992, 1993, 1994, 1995, 1996, 1997, 1998, 1999, 2000.
- Structural Elements:** The plan shows various structural elements such as walls, doors, windows, and stairs. It also includes a north arrow and a scale bar.
- Notes and Annotations:** There are numerous notes and annotations throughout the plan, providing additional information about the building's layout and construction.

FLOOR PLAN (BUILDING "D")

Scott Bluhm 816.268.4224 sbluhm@ngzimmer.com