



**LS COMMERCIAL REAL ESTATE, INC.**  
 BROKERAGE ♦ DEVELOPMENT ♦ MANAGEMENT

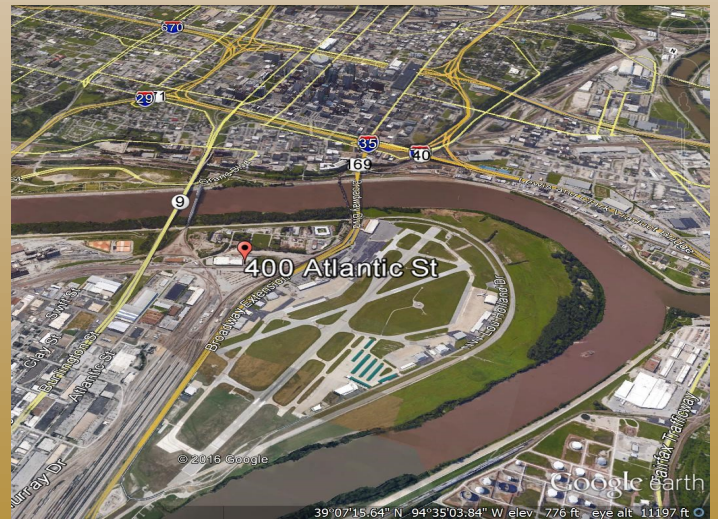
**112,882sf. WAREHOUSE FOR LEASE**  
**Downtown Distribution Center**  
 400 N. Atlantic  
 Kansas City, Mo.

400 N. Atlantic 112,882sf



- NEW CONCRETE FLOOR**
- New Drive In**
- New Parking lot and Truck Court**
- Wet Sprinklers**

- 16 Dock Doors
- 13 Docks with 50,000lb Levelers
- 20' Clear Height
- Close to Major Highways
- 5 acres Outside Storage, Price Separately
- Fenced Lot
- Office Remodeled with long term lease



**NEW on the Market**



**LS COMMERCIAL REAL ESTATE**

BROKERAGE | DEVELOPMENT | MANAGEMENT

CONTACTS **John Smith**  
 smith@lscr.com

**913-681-5888**

8301 W.125TH STREET | SUITE 210 | OVERLAND PARK, KANSAS 66213

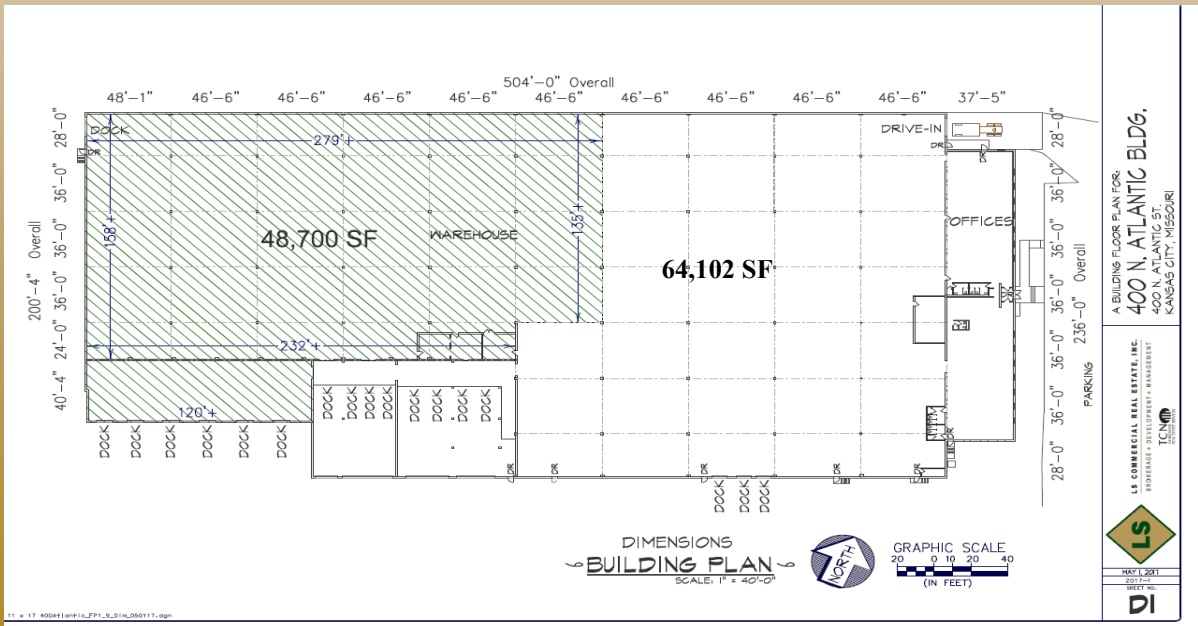




**LS COMMERCIAL REAL ESTATE, INC.**  
 BROKERAGE ♦ DEVELOPMENT ♦ MANAGEMENT

**400 N. Atlantic Kansas City, Mo.**

400 N. Atlantic 112,882sf



**LS COMMERCIAL REAL ESTATE**

BROKERAGE | DEVELOPMENT | MANAGEMENT

CONTACTS **John Smith**  
 smith@lscr.com

**913-681-5888**

8301 W.125TH STREET | SUITE 210 | OVERLAND PARK, KANSAS 66213



**LS COMMERCIAL REAL ESTATE, INC.**

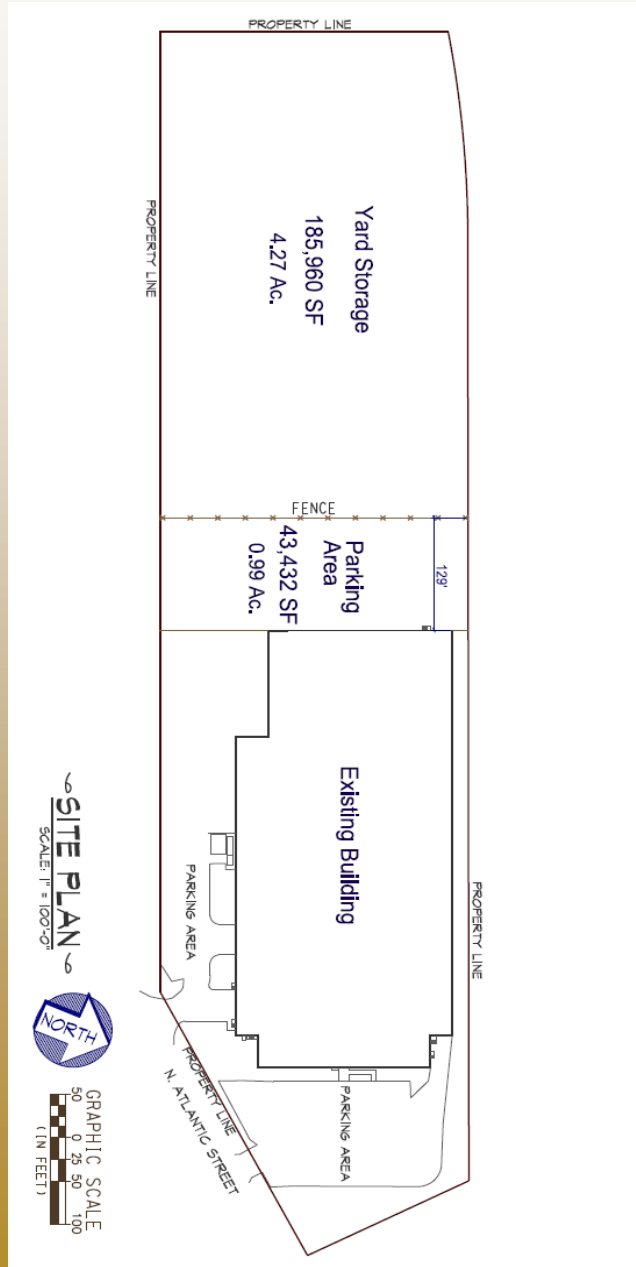
BROKERAGE ♦ DEVELOPMENT ♦ MANAGEMENT

## Downtown Distribution Center

**NOW FOR LEASE 112,882sf**



400 N. Atlantic 112,882sf



**LS COMMERCIAL REAL ESTATE**

BROKERAGE | DEVELOPMENT | MANAGEMENT

CONTACTS **John Smith**

smith@lscr.com

**913-681-5888**

8301 W.125TH STREET | SUITE 210 | OVERLAND PARK, KANSAS 66213