

14000 Marshall Drive

Lenexa, Kansas



Warehouse Long-Term Sublease Available

As exclusive agents, we are pleased to offer the following property for sublease:

- ◆ 76,036 sf available
- ◆ Office area build-to-suit
- ◆ Excellent access to I-35 and I-435
- ◆ Iconic well known property
- ◆ I-35 and I-435 visibility
- ◆ Immediately available
- ◆ Space available through Dec 31, 2025
- ◆ \$3.95/sf gross industrial

Building Features

- Updated T-5 lights with motion sensors
- 18' clear height
- 40'w x 60'd column spacing
- 8 dock-high and 1 drive-in door
- Existing racking could remain in place
- Ample trailer storage available
- Close proximity to UPS hub
- Building can be expanded

Tracey Mann, CCIM, LEED AP 816.223.9450 tmann@ngzimmer.com

Michael L. VanBuskirk, SIOR, CCIM, CRE 816.512.1010 mvanbuskirk@ngzimmer.com

Nick Pickard, CCIM 816.512.1007 npickard@ngzimmer.com

**Newmark Grubb
Zimmer**

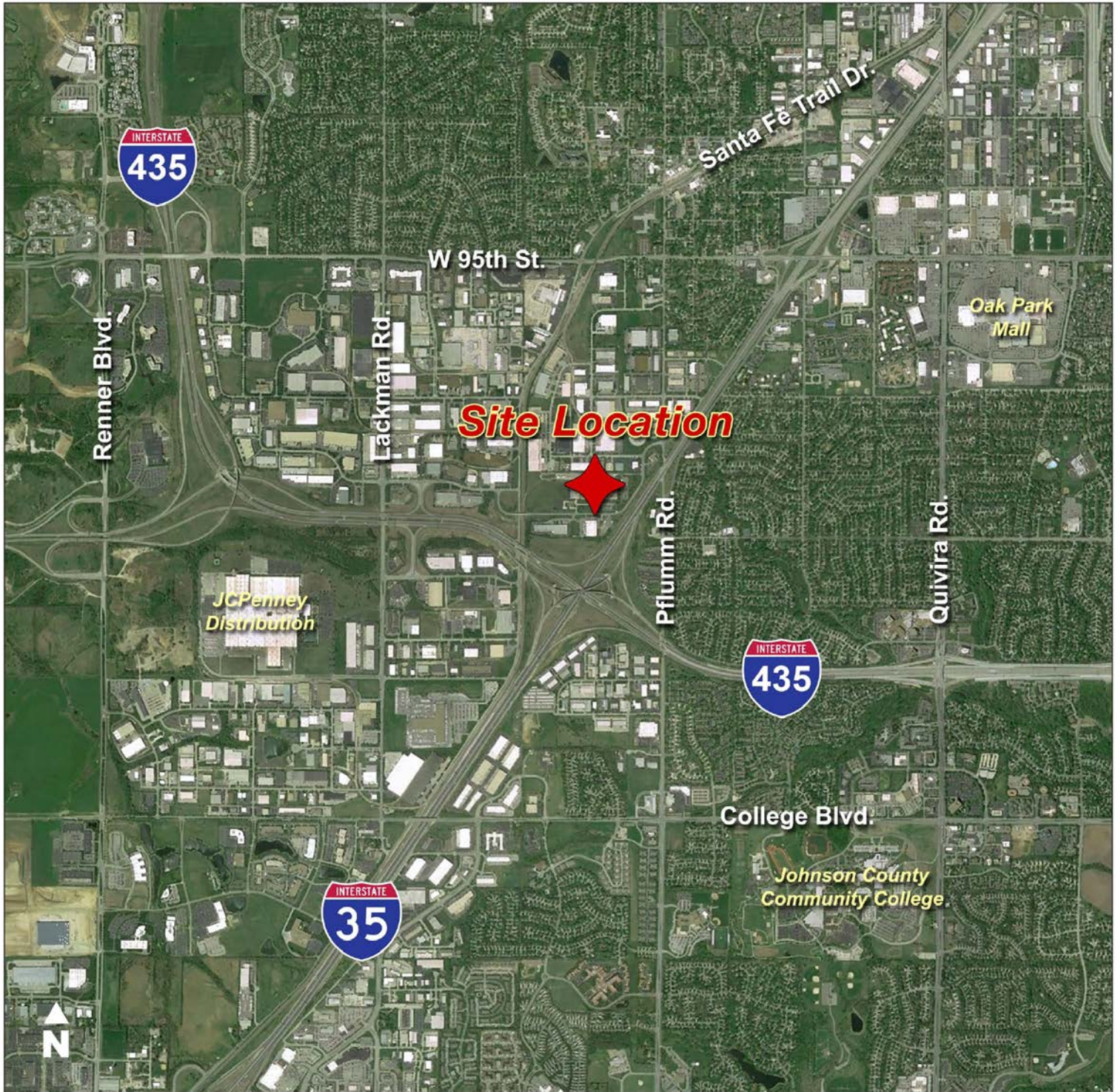
1220 Washington Street, Kansas City, Missouri 64105

Independently owned and operated

Procuring broker shall only be entitled to a commission calculated in accordance with the rates approved by our principal only if such procuring broker executes a brokerage agreement acceptable to us and our principal and the conditions as set forth in the brokerage agreement are fully and unconditionally satisfied. Although all information furnished regarding property for sale, rental, or financing is from sources deemed reliable, such information has not been verified and no express representation is made nor is any to be implied as to the accuracy thereof and it is submitted subject to errors, omissions, change of price, rental or other conditions, prior sale, lease or financing, or withdrawal without notice and to any special conditions imposed by our principal.

14000 Marshall Drive

Lenexa, Kansas



Tracey Mann, CCIM, LEED AP 816.223.9450 tmann@ngzimmer.com

Michael L. VanBuskirk, SIOR, CCIM, CRE 816.512.1010 mvanbuskirk@ngzimmer.com

Nick Pickard, CCIM 816.512.1007 npickard@ngzimmer.com

Newmark Grubb
Zimmer

14000 Marshall Drive

Lenexa, Kansas



Tracey Mann, CCIM, LEED AP 816.223.9450 tmann@ngzimmer.com

Michael L. VanBuskirk, SIOR, CCIM, CRE 816.512.1010 mvanbuskirk@ngzimmer.com

Nick Pickard, CCIM 816.512.1007 npickard@ngzimmer.com

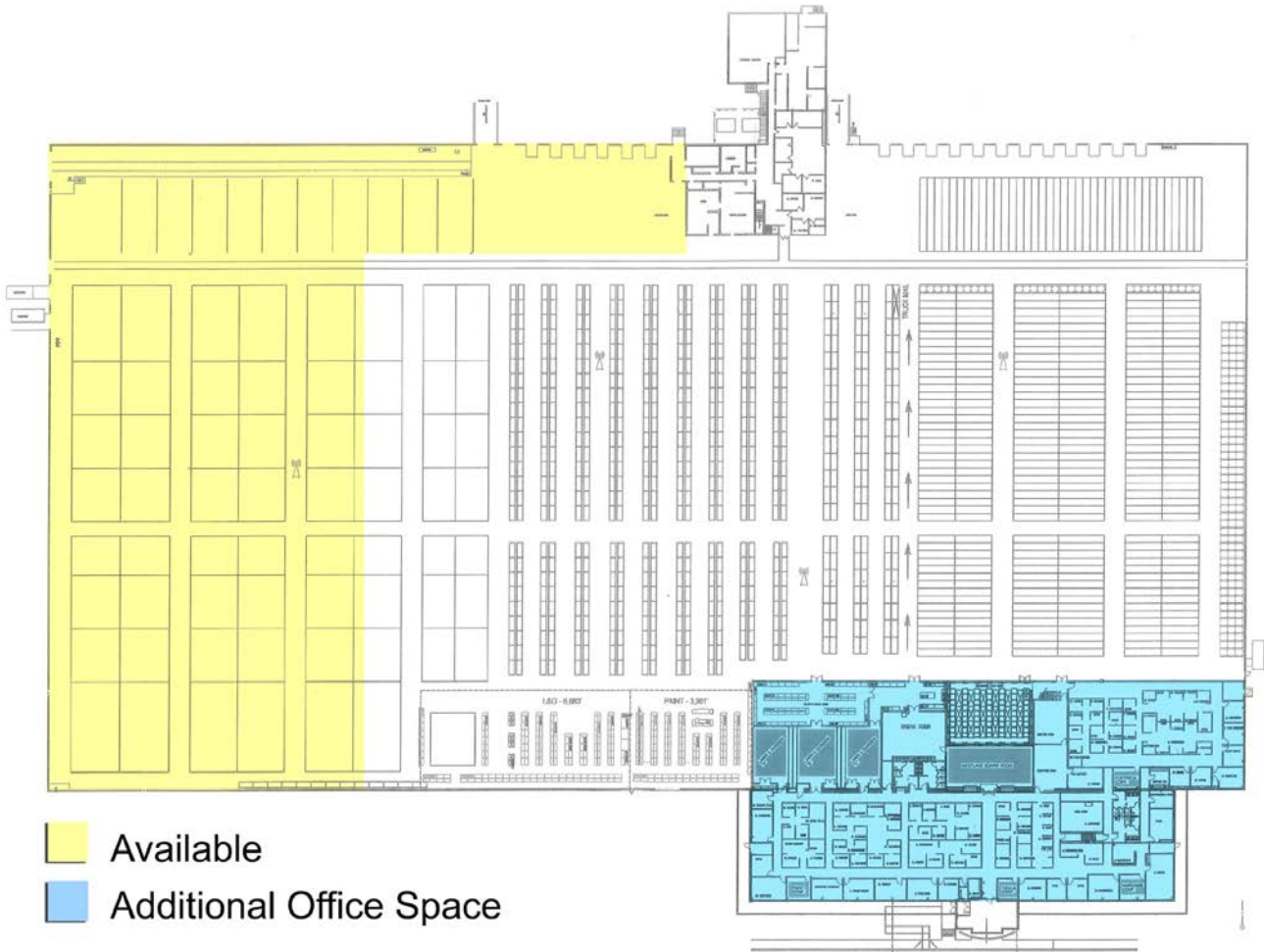
Newmark Grubb
Zimmer

14000 Marshall Drive

Lenexa, Kansas



Floor Plan



Tracey Mann, CCIM, LEED AP 816.223.9450 tmann@ngzimmer.com

Michael L. VanBuskirk, SIOR, CCIM, CRE 816.512.1010 mvanbuskirk@ngzimmer.com

Nick Pickard, CCIM 816.512.1007 npickard@ngzimmer.com

Newmark Grubb
Zimmer