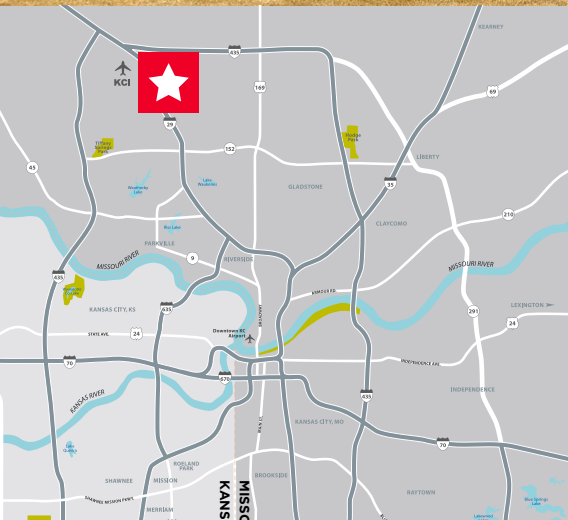




FOR SALE

# Harley-Davidson Motorcycle Plant

11401 N Congress Avenue, Kansas City, MO 64153



**507,729 SF Manufacturing Facility on 314.62 Acres**  
**Sale Price: \$26,500,000**

## Property Highlights

- Harley-Davidson motorcycle manufacturing plant located at intersection of Interstate 29 and 435 and Congress Avenue
- Very clean well-maintained property features 100% air conditioning, excellent loading, heavy electrical power and additional acreage for expansion opportunity
- Clear heights of 35' with typical column spacing of 50' x 48'
- Available immediately

**Whitney Kerr, Jr., SIOR, CCIM**  
Managing Director  
+1 816 412 0250  
whitney.kerrjr@cushwake.com

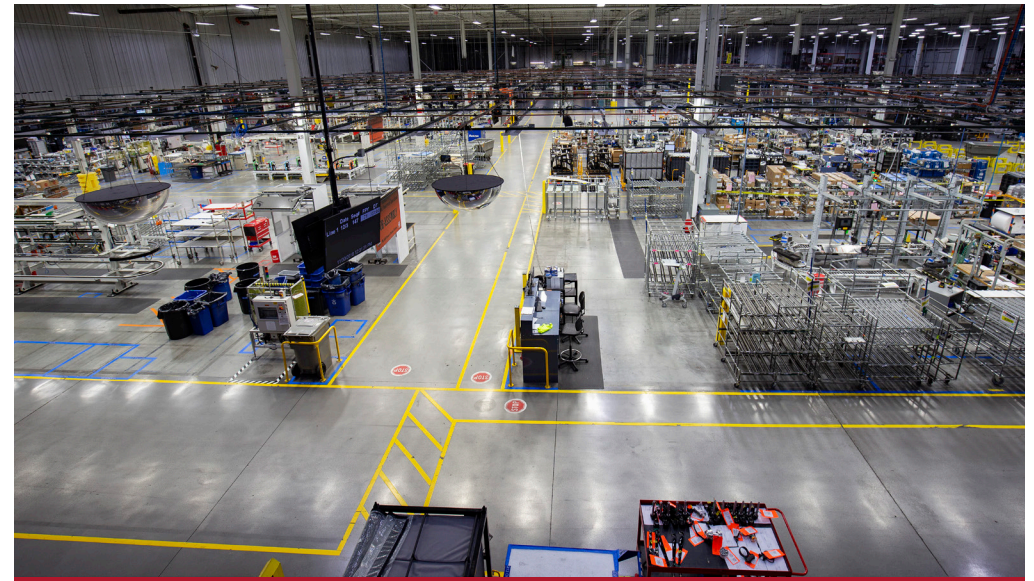
**Alec Blackwell, SIOR**  
Director  
+1 816 412 0242  
alec.blackwell@cushwake.com

4600 Madison Avenue, Suite 800  
Kansas City, MO 64112  
Main +1 816 221 2200  
Fax +1 816 842 2798  
**cushmanwakefield.com**



## Property Highlights

Address	11401 North Congress Avenue
Square Feet	507,729 Gross Square Feet (included 63,000 sf of office space, fitness center, and visitor center/gift shop)
<b>CONSTRUCTION</b>	
Construction	Steel frame with insulated metal panels
Roof Type, Age	Steel roof deck with insulated membrane; replaced in phases in 2014-2016 (15 year warranty)
Fire Protection	Wet
Interior Lighting	T-8 and T-5 in manufacturing area
HVAC	100% AC
Floor	6" Reinforced (8" in some areas)
<b>PROPERTY FEATURES</b>	
Site Area	314.62 acres total
Zoning	M2-3, Manufacturing
Year Built	1997, with additions in 2004 and 2014
Clear Height	35'
Column Spacing	50' x 48"
Loading	25 Docks (10'x12') with Pit Levelers and 2 Drive-In Doors (12'x14')
Car Parking	736 spaces
Power	Six 4000A/480V Feeds







FOR SALE

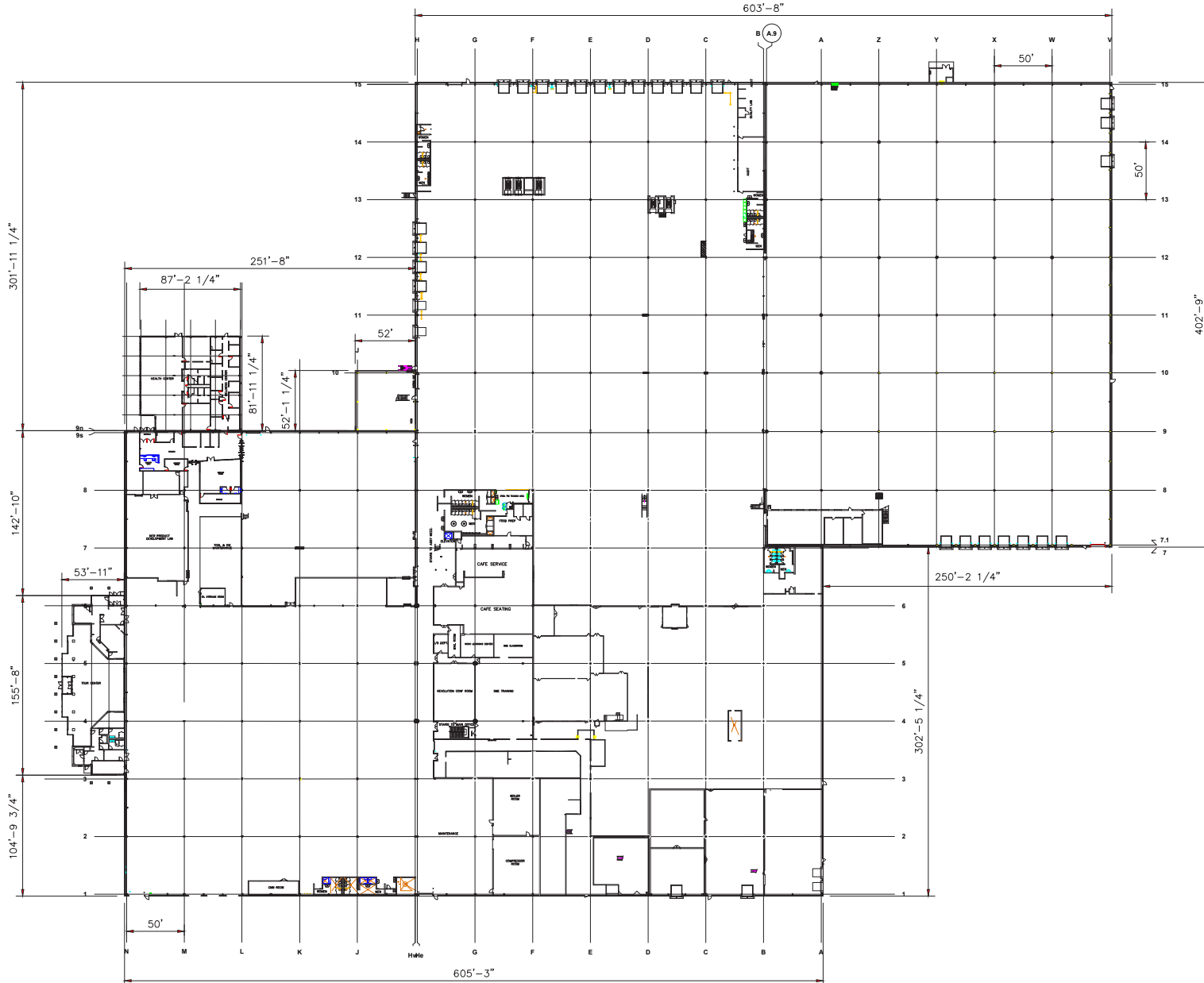
# Harley-Davidson Motorcycle Plant

11401 N Congress Avenue, Kansas City, MO 64153





**Floor Plan**





# Harley-Davidson Motorcycle Plant

11401 N Congress Avenue, Kansas City, MO 64153

## Location Aerial

