

8154 INDUSTRIAL PARK LANE

ATCHISON, KANSAS 66002

MANUFACTURING FACILITY WITH ACTIVE RAIL FOR SALE | 125,108± SF

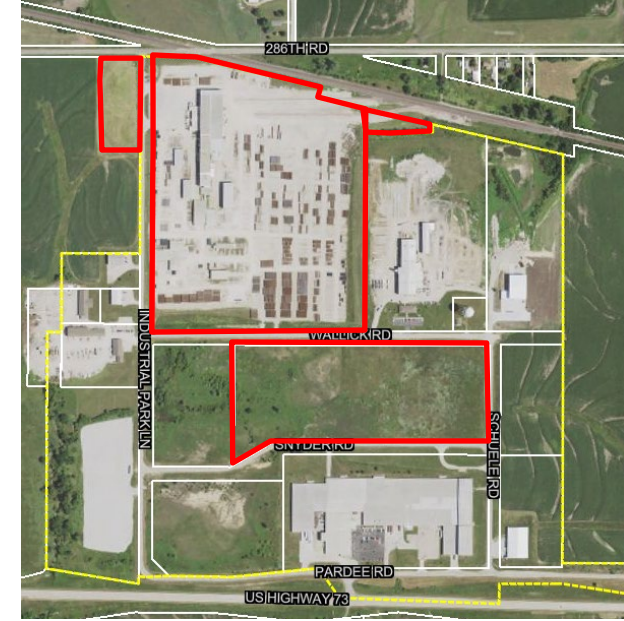


KESSINGER HUNTER
commercial real estate



PROPERTY FEATURES

- Main Building | 73,176± SF on 44± Acres | 30'-41' Clear Height
- Multiple Additional Ancillary Buildings on 44± Acre Site
- Significant Number of Cranes & Drive-In Doors in Place
- *Dual-Active Rail Spur (Union Pacific)*
- 1 Hour North of Kansas City



BUILDING FEATURES	
TOTAL SF	125,108±
LAND SIZE	67.89± Acres
RAIL	Union Pacific
CONSTRUCTION TYPE	Metal
LOADING	Drive-In
POWER	Heavy
AGE	1985 (with various additions of various sizes)
CLEAR HEIGHT	12' – 40'6"
LOT	Improved AB3 Gravel

Asking Price
\$9,000,000

For more information, please contact:

ANDY TAYLOR
Industrial Brokerage
816.936.8503 direct
ataylor@kessingerhunter.com

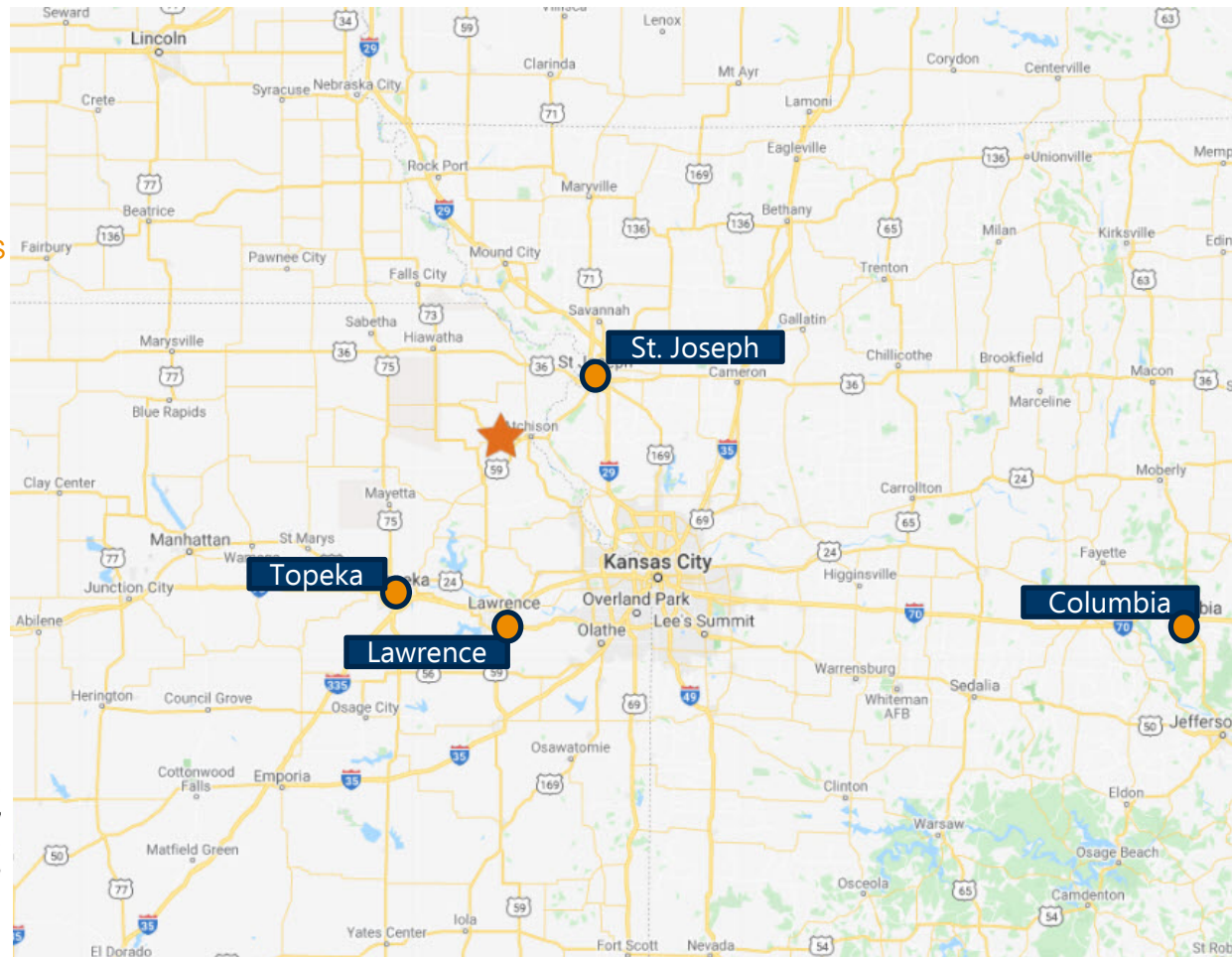
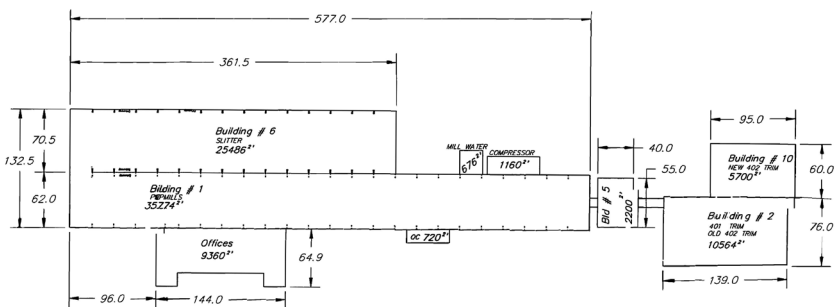
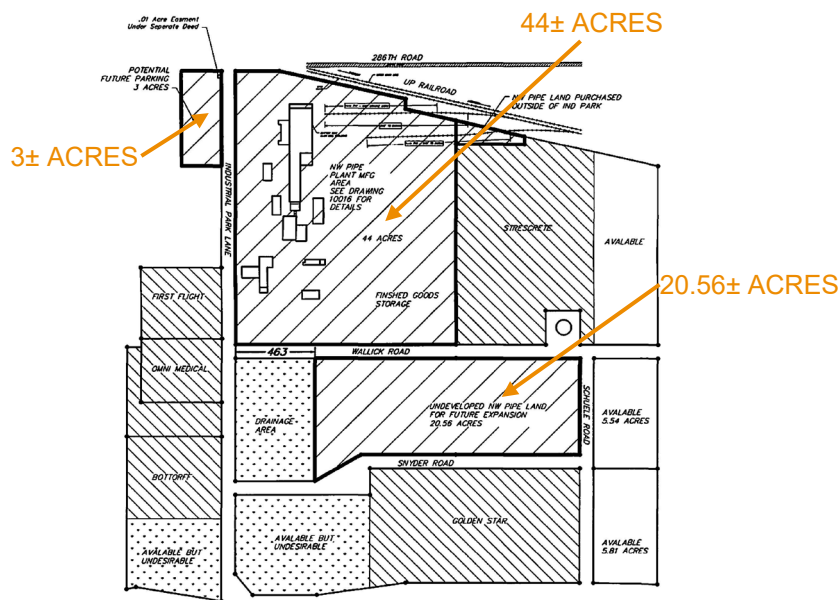
MICHAEL WATSON
Principal, Industrial Brokerage
816.936.8533 direct
mwatson@kessingerhunter.com

KESSINGER/HUNTER & COMPANY, LC
2600 Grand Boulevard, Suite 700
Kansas City, MO 64108
816.842.2690
www.kessingerhunter.com

Information subject to verification and no liability for errors or omissions is assumed. Price subject to change. Updated 4/20/21. To unsubscribe, please click on the link: khlistings@kessingerhunter.com

8154 INDUSTRIAL PARK LANE, ATCHISON, KANSAS 66002

Manufacturing Facility with Active Rail for Sale | 125,108± SF



For more information, please contact:

ANDY TAYLOR
 Industrial Brokerage
 816.936.8503 direct
ataylor@kessingerhunter.com

MICHAEL WATSON
 Principal, Industrial Brokerage
 816.936.8533 direct
mwatson@kessingerhunter.com

KESSINGER/HUNTER & COMPANY, LC
 2600 Grand Boulevard, Suite 700
 Kansas City, MO 64108
 816.842.2690
www.kessingerhunter.com