

Summit Village Corporate Park

Lee's Summit, Missouri



Phase III Sites for Sale or Build-to-Suit

As exclusive agents, we are pleased to offer the following property for sale:

- ◆ Prime Development Ground
- ◆ Master Planned Business Park Setting
- ◆ Located in a Fast Growing and Business Friendly Community
- ◆ Approximately 40 Acres / Can Divide
- ◆ Future Technology Park, Medical Office or Office Flex Development
- ◆ Located within Approved Chapter 353 and CID District
- ◆ Entire Length of Property Fronts I-470
- ◆ Adjacent to Saint Lukes East Hospital
- ◆ All Utilities Available
- ◆ Great Access to I-470 and 350 Hwy

Bernell Rice 816.268.4225 brice@ngzimmer.com

**Newmark Grubb
Zimmer**

1220 Washington Street, Kansas City, Missouri 64105

Independently owned and operated

Procuring broker shall only be entitled to a commission calculated in accordance with the rates approved by our principal only if such procuring broker executes a brokerage agreement acceptable to us and our principal and the conditions as set forth in the brokerage agreement are fully and unconditionally satisfied. Although all information furnished regarding property for sale, rental, or financing is from sources deemed reliable, such information has not been verified and no express representation is made nor is any to be implied as to the accuracy thereof and it is submitted subject to errors, omissions, change of price, rental or other conditions, prior sale, lease or financing, or withdrawal without notice and to any special conditions imposed by our principal.

Summit Village Corporate Park

Lee's Summit, Missouri

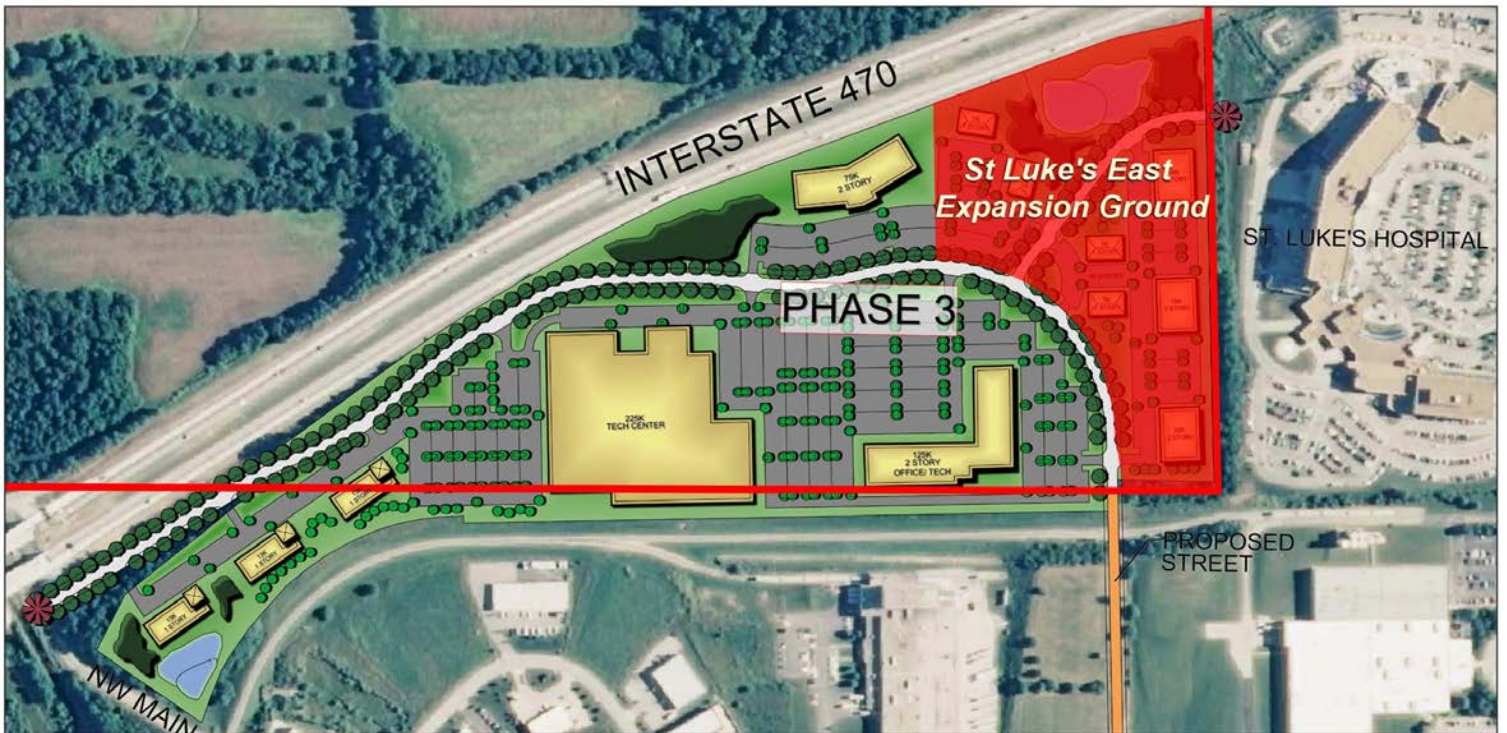


Bernell Rice 816.268.4225 brice@ngzimmer.com

Newmark Grubb
Zimmer

Summit Village Corporate Park

Lee's Summit, Missouri



Bernell Rice 816.268.4225 brice@ngzimmer.com

Newmark Grubb
Zimmer