



Raymore, MO | **North Cass Business Park**

370,000 - 1,750,000 SF
Light Industrial Flex Space

Interstate 49 & North Cass Parkway | Raymore, MO



Grant Harrison | VanTrust Real Estate
Director, Development
E | grant.harrison@vantrustre.com
P | 816.569.1441



David Gress | City of Raymore, MO
Director, Economic Development
E | dgress@raymore.com
P | 816.892.3015



John Stafford, SIOR | Colliers International
Executive Vice President
E | John.Stafford@colliers.com
P | 816.556.1184
C | 913.461.5229



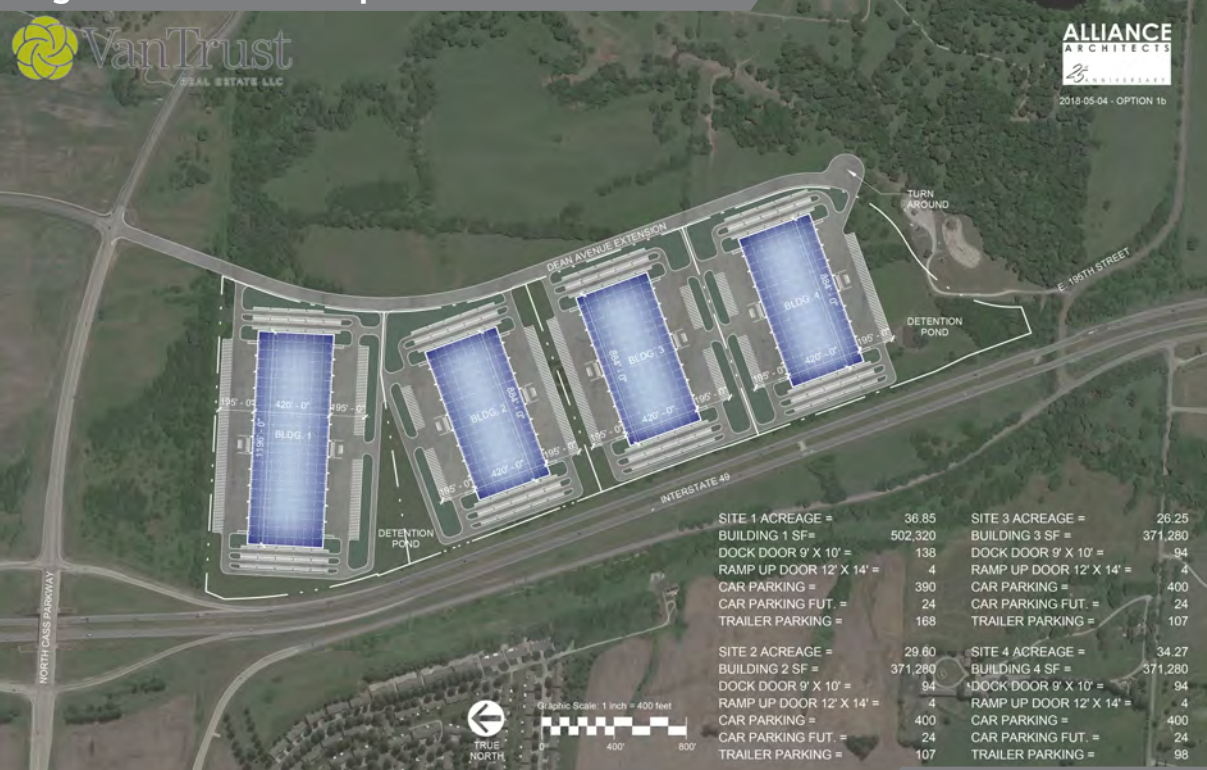
Raymore, MO | North Cass Business Park

Southeast Corner of I-49 & North Cass Parkway

The North Cass Business Park is located at the southeast intersection of Interstate-49 & North Cass Parkway in Raymore, Missouri. The property is approved by the City of Raymore for a PUD (Planned Unit Development) with the capacity for an industrial project between 370,000 - 1,750,000 square feet.

370,000 - 1,750,000 SF
Light Industrial Flex Space

Interstate 49 & North Cass Parkway | Raymore, MO



- 136 Acres available**
For Sale/Lease
- Built-to-Suit Options**
Available
- \$2.85/Land SF**
(inclusive of entitlements, utilities and infrastructure)
- Competitive Real Estate**
Tax Abatement Package

Prime and Direct
Access
to Interstate 49

North Cass Business Park is the **preeminent** industrial park location

15 minutes to I-435/I-470

25 minutes to I-70/I-35/I-29

28,000+ Cass County Labor Pool

Situated for **SUCCESS**

